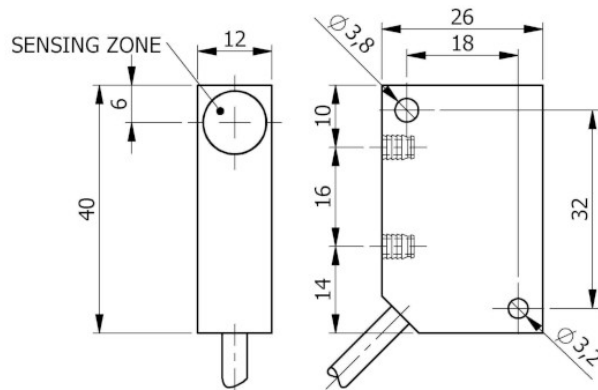


Part number: **SIP000268** Model: **SIP12-N2 LC5**



Dimension in mm

## 1. TECHNICAL CHARACTERISTICS



### Electrical data

Power supply type:		Direct current
Working voltage:	[V]	5 ÷ 30
Current consumption:	[mA]	On <= 1 mA - Off >= 3 mA @ 8.2V
Protection class:		III
Reverse polarity protection:		Presente

### Outputs

Electrical design:		Namur
Max switching frequency:	[Hz]	2000

### Detection zone

Switching distance-Sn:	[mm]	2
Real sensing distance-Sr:	[mm]	2 ±10%
Operative distance-So:	[mm]	0 ÷ 1.62

### Accuracy and Deviations

Correction factor:		Stainless steel: 0.9 - Brass: 0.5 - Aluminium: 0.4 - Copper: 0.4
Switching point drift:	[%Sr]	-1
Repeatability:	[%Sn]	< 3

### Environmental conditions

Temperature limits:	[°C]	-25/+70
IP rating:		IP65-IP66-IP67

### Mechanical data

Housing:		Parallelepiped
Dimensions:	[mm]	12 x 40 x 26
Materials:		Housing: PVC black - Sensing area: PVC red
Mounting:		Embeddable
Weight:	[g]	140

**Electrical connection**

Cable: 5 m - PVC/PVC -2 x 0.25 mm<sup>2</sup>

**Compliance to Standards / Directives**

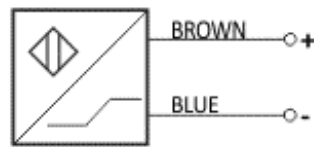
Directives compliance: 2014/30/EU -Electromagnetic compatibility directive (EMC)

Standards compliance: EN60947-5-6 - Product standard

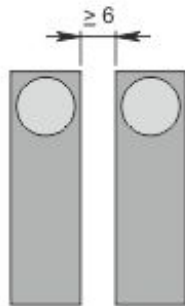
**2. NORME DI INSTALLAZIONE**

**WIRING DIAGRAM**

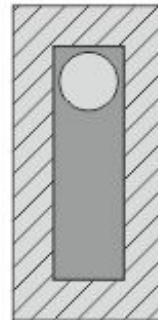
**2 WIRES CABLE**



**INSTRUCTIONS FOR CORRECT INSTALLATION**

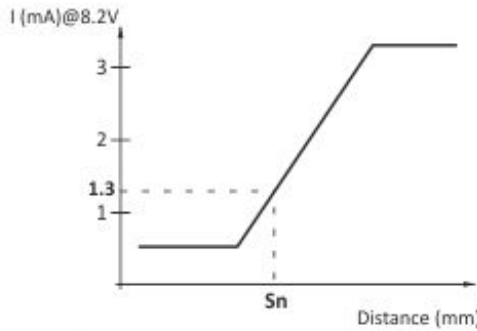


Side by side mounting

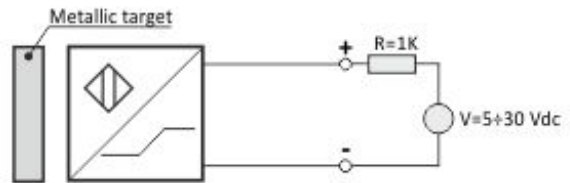


Flush mounting

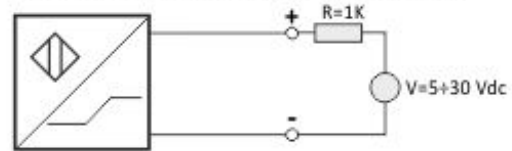
Titolo img 1



The NAMUR inductive sensors are electronic devices whose absorbed current varies in the presence of a metallic target.



In presence of metallic target  $I \leq 1\text{mA}@8.2\text{V}$



In absence of metallic target  $I \geq 3\text{mA}@8.2\text{V}$